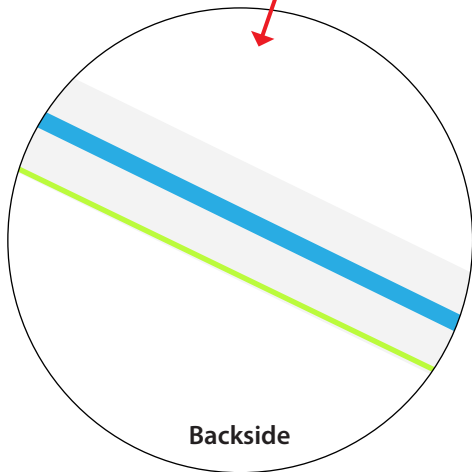
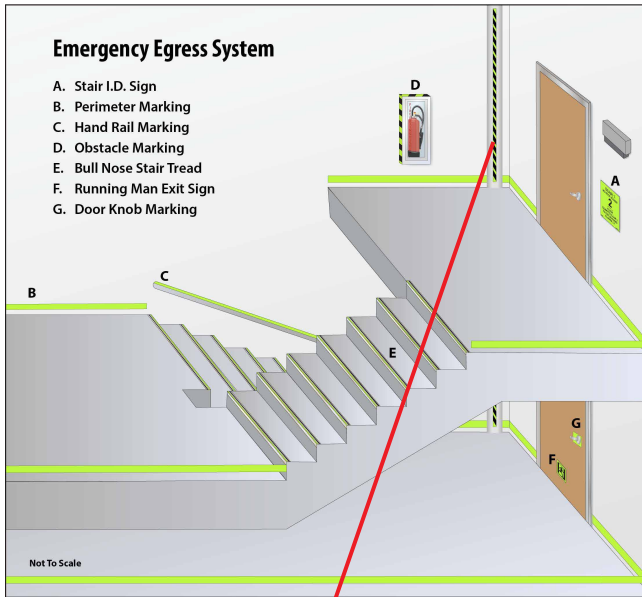


INSTALLATION SPECIFICATIONS

OBSTACLE MARKERS



INSTALLATION PROCESS:

GBC Safety Glow Obstacle Markers are to be installed on anything that protrudes more than 4" off of the wall. These markers illuminate the obstruction in low light/no light situations so that it is not a safety hazard.

1. Prepare the surface by thoroughly cleaning with a 50/50 denatured alcohol/water solution to remove all contaminants.
2. Determine how many sections are required to complete each section of the obstacle marker.
3. Round the end of 1 section if multiple pieces are needed to complete the section. Next, apply a 1/8" thin bead of *Loctite PL Premium 3x adhesive* with a caulk gun.
4. Line up the marker on top of the obstruction. If additional pieces are needed to complete the section, measure and cut the pieces with a metal cutting scissors. Round the final end of the section and glue the same as the previous piece.
5. Apply 1" pieces of painters tape around the obstacle every 6"-12" as needed to ensure complete contact and at each end, to secure the piece. After 12 hours, remove the tape and clean up any adhesive that may have squeezed out. The installation of the Obstacle Marker is now complete.



GBC-7015-RPF



GBC-7015-AF



GBC-7015-AC



GBC-701-RPF



GBC-701-AF



GBC-701-AC



For more information visit: www.gbcsafetyglow.com

3201 Progress Way Kaukauna, WI 54130
920.462.4242 Toll Free: 844.336.4875
info@gbcsafetyglow.com